

Report to Donors

Library enhancements made possible in 2015 with your support



The Seattle Public Library Foundation

A Letter from the Board President

Dear Friends,

The Seattle Public Library Foundation wants our community to be...

- › A place where every child is a skilled and enthusiastic reader.
- › A place where every library is a warm and welcoming community space.
- › A place where everyone is inspired and empowered by easy access to books and information.

During 2015 your support moved us closer than ever to those goals. And your gifts were used to fund exciting opportunities like bringing the upcoming national touring exhibition of Shakespeare's First Folio to Seattle. Be sure and visit the Central Library to see it any time between March 21 and April 17. I invite you to look through this report on the Foundation's activities to learn more about the impact your gifts made.

Your support allows the Library to do so much more, to touch so many more lives. To offer thousands of free public programs that help children get excited about reading. To expand our Library's collection so that more books are available in every form and format. To make improvements to our libraries so that they meet the changing needs of our community.

As a donor to The Seattle Public Library Foundation, you make our libraries come alive. You help our city keep learning. You inspire the stories we hear from grateful patrons every day.

So, on behalf of the thousands of people from all walks of life who turn to The Seattle Public Library every day to learn something new, our most sincere thanks.

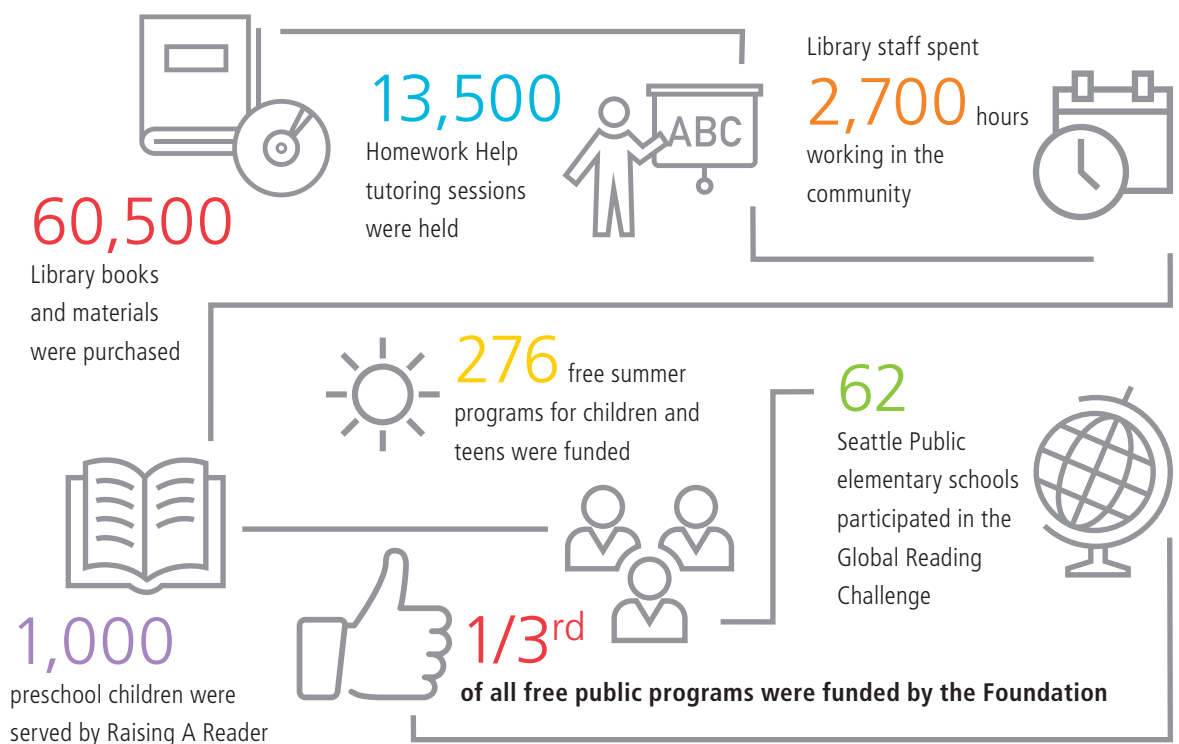
Lynn Pigott Mowe

President of The Seattle Public Library Foundation



Lynn Pigott Mowe

Thanks to Your Generous Donations to the Foundation in 2015



2015 Financial Information

Year Ending December 31, 2015

Contributions

Donations	\$3,727,000
Donated goods and services	\$357,000
Total Contributions	\$4,084,000

Expenses

Grants to the Library

Collections and Resources	\$1,496,000
Community Engagement	\$1,640,000
Reimagined Spaces	\$511,000
Seattle Culture and History	\$123,000
Technology and Access	\$431,000
Youth and Family Learning	\$1,015,000
Other – Staff training and strategic support	\$562,000
Total Grants	\$5,778,000

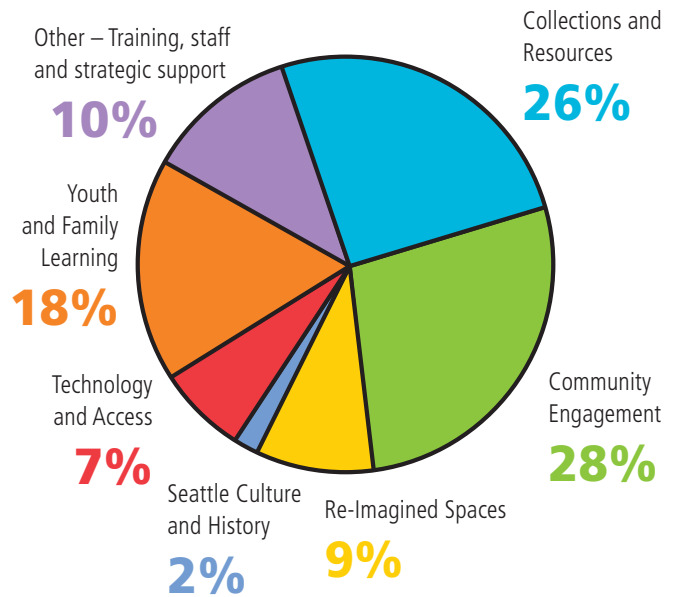
Foundation Operations

Administration	\$645,000
Fundraising	\$389,000
Total Operations	\$1,034,000

Total Expenses \$6,812,000

These figures are unaudited. The Foundation's professional independent audit is released in the spring.

How your gifts were invested



You supported entrepreneurship and workforce development

Library2Business is a program to support entrepreneurs in our community with information, education, networking, and referral assistance. Funded by a grant from the Foundation, the Library hosted and presented at dozens of business and networking events throughout Seattle and provided services



Library2Business manager Jay Lyman (right) and entrepreneur Reetu Gupta

to more than 1,000 people at those events. It also added online resources such as the Business Plans Handbook and the RMA eStatement Studies for anyone who has a great idea for a new business.

In November, the Foundation helped the Library host Startup Weekend EDU, which brought together a community of tech entrepreneurs focused on solving problems related to education. Our business librarians were available all weekend to provide reference and research support. The larger aim of Startup Weekend is for all participants to network, exchange ideas, and learn important skills and concepts for starting a business. Thanks to your support, the Library became an entrepreneurial think tank for the weekend and 10 ideas were developed into budding business startups that have the potential to create jobs and fuel our economy.

You helped re-imagine Library spaces

The Rainier Beach Branch started the new year with a modern look and feel. It's bright, open and offers new spaces and resources that respond to the way people use libraries in the 21st century.



Story time in the children's area at the Rainier Beach Branch

The children's area is expanded so popular programs like story time can be held there. Patrons can browse through hundreds of new books and media, read in the comfortable new furniture, check out a laptop or iPad for in-library use, or explore the new digital media studio. Your donation to the Foundation helped fund the remodel along with a major grant from the D.V. and Ida J. McEachern Charitable Trust.

You supported Library innovation

The Library's Wi-Fi hotspots program enabled people to literally check out the Internet for free from the Library. The program was made possible by a very generous grant from



Residents of NewHolly sign up for Wi-Fi hotspots

Google and the cooperation and assistance of Verizon. Several thousand Seattle residents have taken advantage of the program so far. The Library also collaborated with Seattle Housing Authority to provide hotspots for longer lending periods to residents of public housing in NewHolly and to deliver digital literacy training and other services.

Thanks to a grant from the Safeco Foundation, the Library added software for low-vision and blind patrons to all public Internet computers. All Library locations have ZoomText screen magnification software and the JAWS screen-reading software available. Each library also has a large-type keyboard, low-vision writing frames and guides, and print magnifiers available for checkout.

You made Seattle's history more accessible

Your gifts to the Foundation expanded online access to several significant collections, including the Frank A. Kunishige collection of photographs, the Edward S.



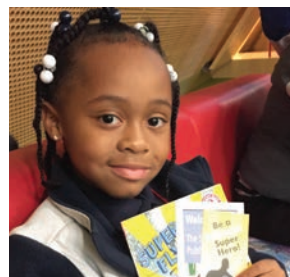
Photo of Edward S. Curtis from the Library's online collection

Curtis letters, and the entire run of the Seattle Municipal News dating from 1910. In 2015, the Library was able to add 5,350 items to its online collection including photographs, maps, menus, artwork and more. Data shows that there was a 24% increase in users of this collection.

One notable user of the Library's Special Collections was The Space Needle Corporation, which worked with the Library to have the George Gulacsik Collection of the Space Needle digitized so it could use the images in a new exhibit planned for the summer.

You supported young readers

Two hundred and eighty first-graders from four Seattle public elementary schools in the Rainier Valley visited the Central Library in November as part of a Foundation-funded effort to encourage reading. The classes came by bus and spent the day at the library, enjoying a special tour, program, and scavenger hunt.



A young reader with her new books after a tour of the Central Library

At the end of the day, each child received a book to take home. These students were all "early readers," meaning they're just starting to read on their own. This is a critical time for children and it is especially important to guide them to books that are just right for their reading level—not too hard and not too easy.

The Seattle Public Library Foundation 2015 Board of Directors

- Lynn Pigott Mowe
President
- Ross C. Baker
Vice President
- Irene Yamamoto
Treasurer
- Dan McConnell
Secretary
- Anne Repass
Immediate Past President
- Susan Adkins
- Stephanie Axelrod
- Greg Berkman
- Ted Collins
- Patricia L. Dawson, MD
- Sue Donaldson
- Jodi Green
- Sharon Hammel
- Carla Lewis
- Mary Mara
- Ruth Massinga
- Tyler Preston Mickey
- Nick Momyer
- Grace Nordhoff
- Glenna Olson
- Susan Potts
- Deborah Rosen
- Lori Scott
- Annie Searle
- Claudia Skelton
- Bill Stafford
- Neal Sullins
- Ina Goodwin Tateuchi
- Patricia Walker
- Ex-Officio**
 - Marie McCaffrey
 - Carmen Bendixen
- City Librarian**
 - Marcellus Turner
- Executive Director**
 - Jonna Ward

Thank You to our Business, Foundation and Community Partners

In addition to support from 6,000 individuals, the Foundation's success in 2015 was made possible by many organizations throughout the community that gave gifts to support the Library. We want to thank the following businesses, foundations, and organizations that contributed \$250 or more in cash, employee gift matching programs, grant funds, or in-kind donations in 2015.

Abel Family Fund	KSTW	Target	US Bank Foundation
Adobe Systems	Kunis Foundation	Tateuchi Foundation	Vanguard Charitable
Alpha Kappa Alpha Sorority Inc., Delta Upsilon Omega Chapter	KUOW	Third Place Books	Washington State Employees
Amgen Foundation	Leon A. Uziel Charitable Trust	Tides Foundation	Washington Women's Foundation
Avenace, Inc.	LexisNexis	Tom Douglas Catering	Wealth Strategies Group
The Baltimore Foundation	D.V. & Ida McEachern Charitable Trust	U.S. Bank	Weitzel Construction
Bank of America	Mennonite Foundation	Union Bank N.A.	Wells Fargo
Bank of America Charitable Gift Fund	Microsoft Corporation	United Way of King County	The Hans & Elizabeth Wolf Foundation
Elaine and Vincent Bell Foundation	Mirabella Seattle Residents' Association	United Way Of Pierce County	Woodland Park Zoo
Yancey C. Blalock Lodge # 265	Moccasin Lake Foundation	University Book Store	
Abe & Sidney Block Foundation	Network for Good		
BMO Harris Bank N.A.	Nintendo of America		
The Boeing Company	The Norcliffe Foundation		
The Book Club of Washington	Nordstrom		
Carillon Point	Northwest Literacy Foundation		
Cogan Family Foundation	Matthew G. Norton Company		
Edward S. Curtis Foundation	PACCAR Inc.		
D.A. Davidson & Company	Pacifica Law Group		
The Dickey Fund	The Pride Foundation		
Elliott Bay Book Company	Norman Raab Foundation		
The Ellis Foundation	Raven Foundation		
Employees Community Fund of Boeing Puget Sound	RealNetworks Foundation		
ExxonMobil Corporation	The Reed Foundation		
F5 Networks	Regence BlueShield		
Feinberg Foundation	Rotary Club of Ballard		
Hugh & Jane Ferguson Foundation	Rotary Club of Fremont		
Fidelity Charitable Gift Fund	Frank Russell Company		
Friends of The Seattle Public Library	Safeco Insurance Foundation		
Bill & Melinda Gates Foundation	Salesforce		
Goldman Sachs Philanthropy Fund	Schwab Charitable Fund		
Google	The Seattle Foundation		
H. D. Fowler Company	Seattle Metropolitan Credit Union		
Benjamin and Margaret Hall Charitable Trust	Seattle Monorail		
Horizon House Residents' Council	Seattle Times		
John C. & Karyl Kay Hughes Foundation	Sill Family Foundation Inc.		
Judith and Henry Sauer Charitable Foundation	Social Justice Fund NW		
John S. and James L. Knight Foundation	The Space Needle Corporation		
Koh-Lee Foundation	Spark Charitable Foundation		
	Starbucks Coffee Company		
	Stocker Foundation		
	Tableau		

Legacy Gifts

This year, the Foundation received several generous legacy gifts from individuals who included The Seattle Public Library Foundation in their estate plans. Their thoughtful consideration and planning will help sustain the Library's collections, programs, and services for future generations.

Ogden Bailey	Fred B. Nather
Rosalie Alice Edburg	Dorothy O'Brien
Fred E. Guptill	Sally M. Samuelson
Russell Hofbeck	Virginia I. Schone
Rosal Mangiante	Dorothy E. Verdoorn
Irma Mathisen	



Don't miss seeing copies of Shakespeare's First and Third Folios, two of the rarest books in the world when they are on display at the Central Library, Mar. 21-April 17. For information and free tickets go to spl.org/Shakespeare.